



Formica Ligna[®]

NATURAL WOOD SURFACING *by* FORMICA GROUP



Straight grain



V8398
Messina Rigato

Matte™



V8398
Messina Rigato

Chiselled™



V8417 Washed Oak

Grained™



V8416
Sabbia Rigato

Matte™



V8416
Sabbia Rigato

Chiselled™



V8403
Aveela Rigato

Matte™



V8403
Aveela Rigato

Chiselled™



V8400
Savona Rigato

Matte™



V8400
Savona Rigato

Chiselled™



V8401
Sublime Ash

Matte™



V8401
Sublime Ash

Chiselled™



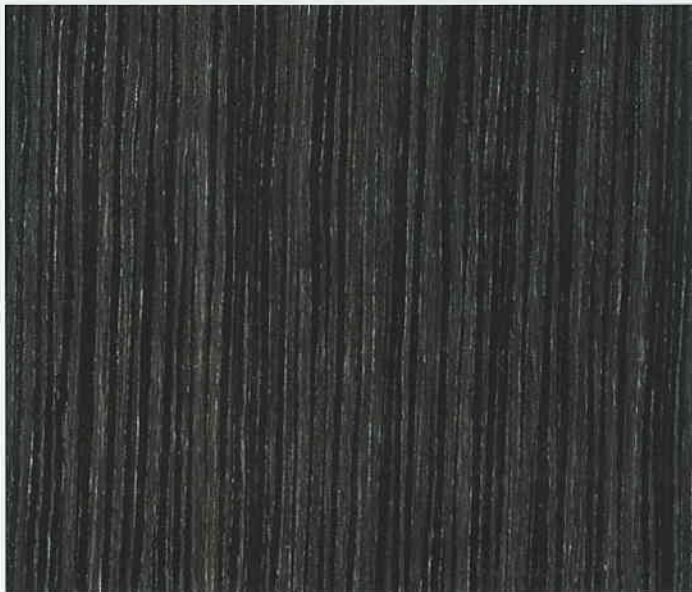
V8409 Wild Pecan

Matte™



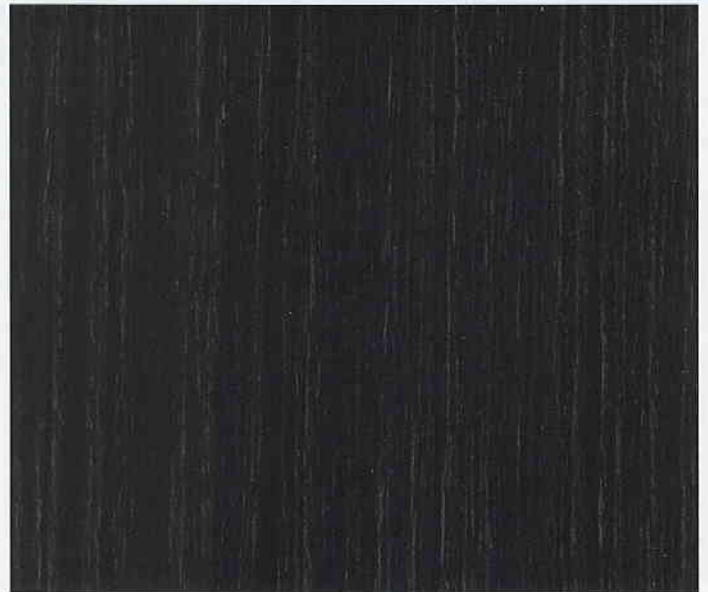
V8414 Ebano Medio

Gloss™



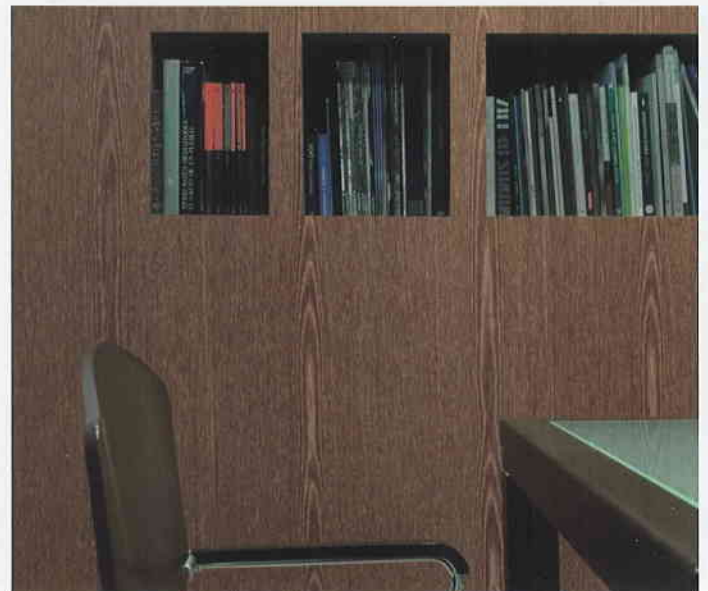
V8421 Zingana Argento

Grained™



V8412 Como Rigato

Matte™



Use and care

Formica Ligna® laminates are suitable for dry, interior, vertical applications where demands on wear, heat and humidity resistance are moderate. They are ready to use and need no further surface finishing. Since **Formica Ligna** laminates comprise a real wood surface, they should not be used in situations where they are directly exposed to strong sunlight.

Formica Ligna laminates should be treated in the same way as exclusive wood furniture and cleaned with a damp cloth and mild detergent. If in doubt about the suitability of a particular detergent or cleaner, check with its manufacturer.

Do not use polish or wax on **Formica Ligna** surfaces.

Do not use abrasive or solvent-based cleaners, acid- or alkaline-based cleaners, powders, scouring pads, steel wool, sandpaper or other harsh materials on **Formica Ligna** surfaces.

Accidental spills of harsh materials should be wiped off immediately and the area cleaned thoroughly with a damp cloth.

Never put hot objects directly onto **Formica Ligna** surfaces.

Colour and light fastness

Formica Ligna laminates are made with real wood veneer; consequently, slight colour, pattern and grain variations might be evident from sheet to sheet, reflecting the natural beauty of this material.

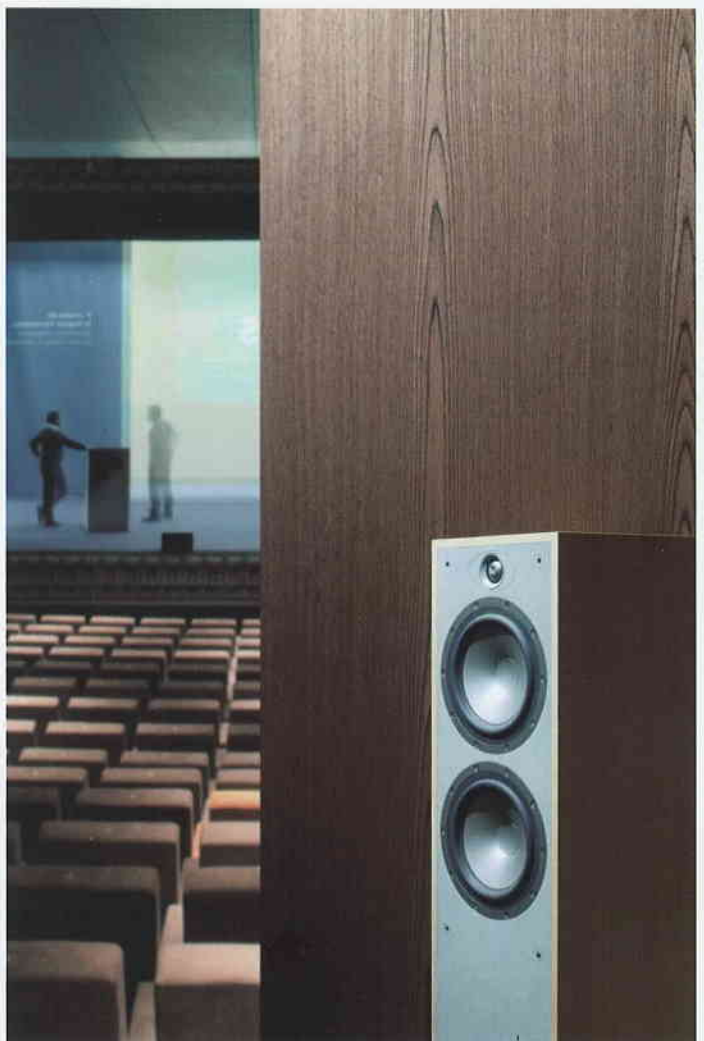
As with natural wood, exposure to direct sunlight can provoke colour change; colour change over time does not indicate a product defect. Please refer to the **Formica Ligna** fabrication guide for further advice on storage, handling and fabrication.



ISO 14001:2004



The mark of responsible forestry





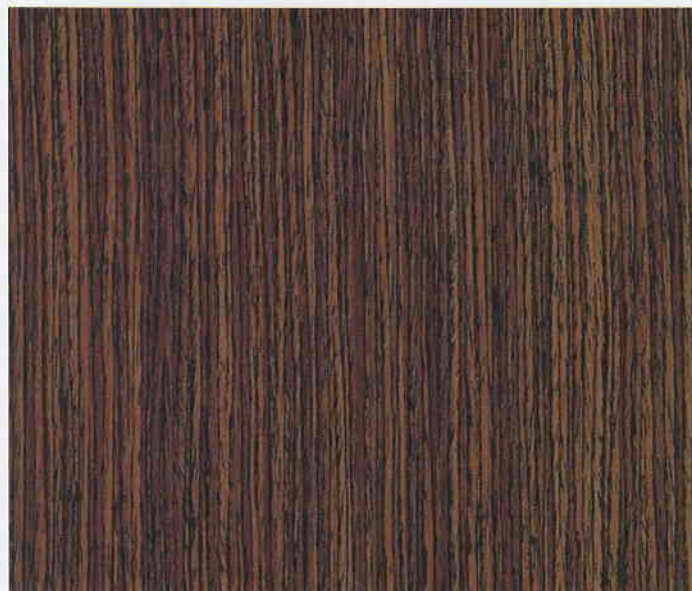
V8402
Halcyon Crown

Matte™



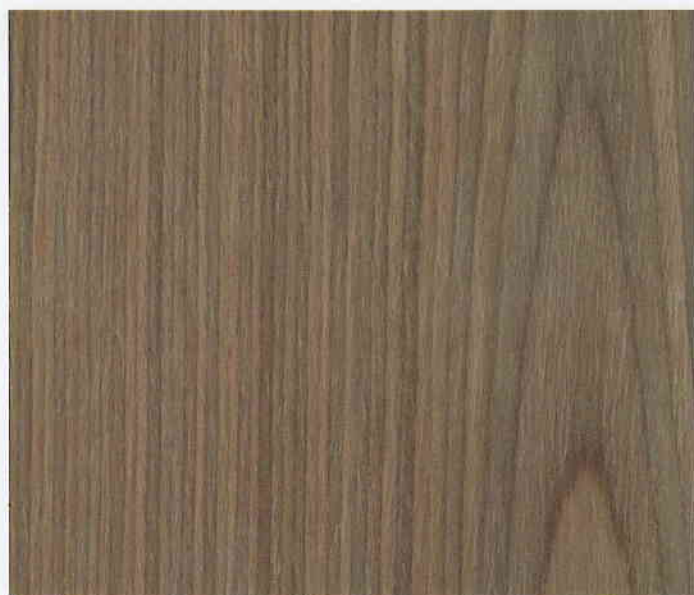
V8402
Halcyon Crown

Gloss™



V8408 Rio Mahogany

Gloss™



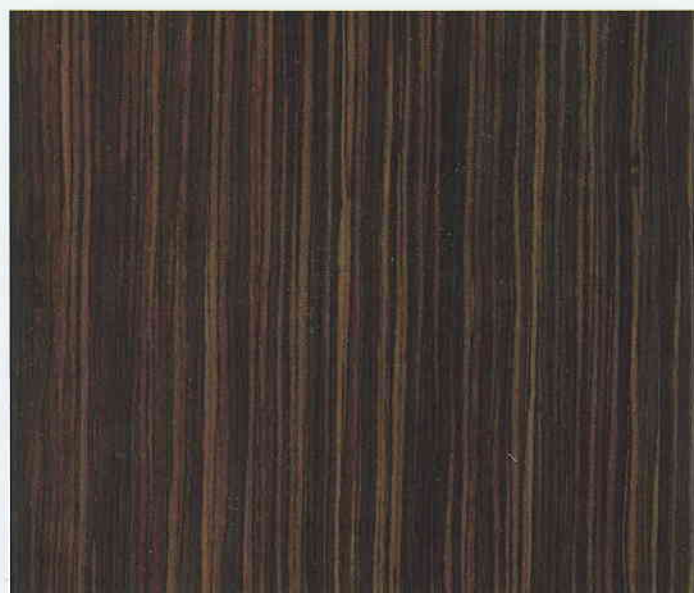
V8405 Siena Crown

Matte™



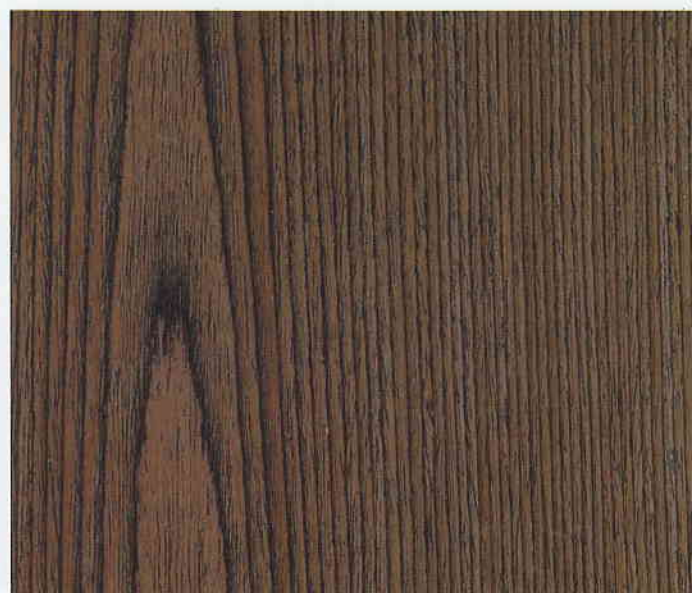
V8406 Weathered Walnut

Matte™



V8407 Milano Crown

Gloss™



V8418 Lauro Crown

Gloss™



V8419
Koto Fino

Grained™



V8419
Koto Fino

Chiselled™



V8395
Buff Fino

Grained™



V8395
Buff Fino

Chiselled™



V8396
Grigio Fino

Grained™



V8396
Grigio Fino

Chiselled™



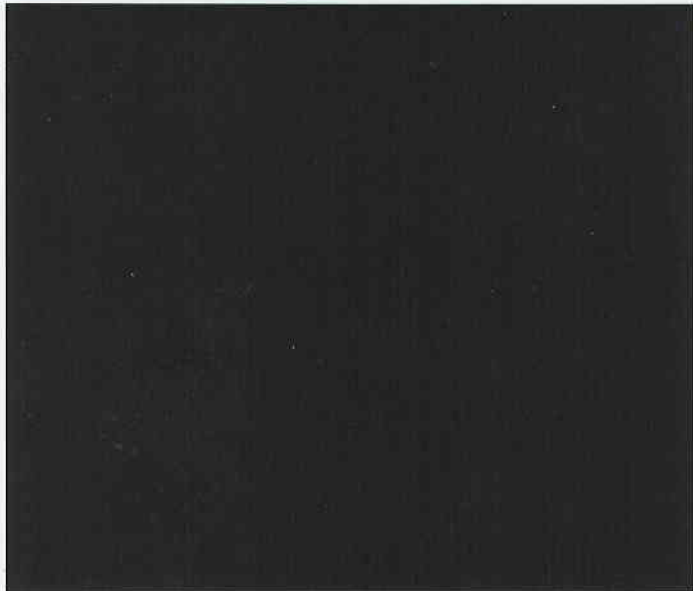
V8420
Noce Fino

Grained™



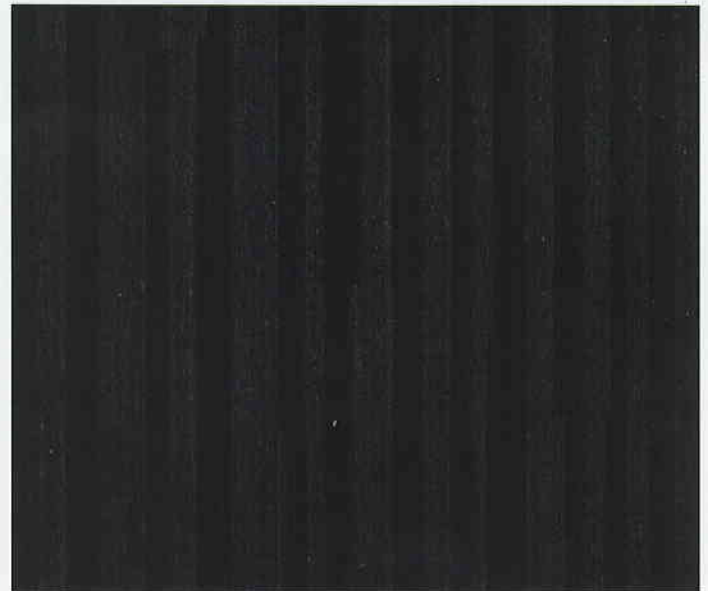
V8420
Noce Fino

Chiselled™



V8397 Nero Fino

Grained™



V8397 Nero Fino

Chiselled™

Formica Ligna®

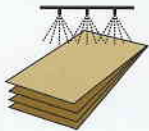
NATURAL WOOD SURFACING *by* FORMICA GROUP

wood for your projects, good for you

Presenting Formica Ligna®, real wood veneer surfaces for creating sophisticated, warm, high quality environments. An exceptional product for interior, vertical applications due to its manufacturing process, innovative and sustainable, with a broad range of four woods families including more than 30 designs and exclusive finishes.

If you are looking for the beauty of real wood for your projects without sacrificing the advantages and properties of Formica® high pressure laminate, Formica Ligna is for you.

	Code	Name	Design family	Sheet size 3050 x 1220 mm			
				Chiselled™	Gloss™	Grained™	Matte™
	V8395	Buff Fino	Finegrain	VCH		VGR	
	V8396	Grigio Fino	Finegrain	VCH		VGR	
	V8397	Nero Fino	Finegrain	VCH		VGR	
	V8398	Messina Rigato	Straight grain	VCH			VMA
	V8400	Savona Rigato	Straight grain	VCH			VMA
	V8401	Sublime Ash	Straight grain	VCH			VMA
	V8402	Halcyon Crown	Crown		VGL		VMA
	V8403	Aveela Rigato	Straight grain	VCH			VMA
	V8405	Siena Crown	Crown				VMA
	V8406	Weathered Walnut	Crown				VMA
	V8407	Milano Crown	Crown		VGL		
	V8408	Rio Mahogany	Crown		VGL		
	V8409	Wild Pecan	Exotic				VMA
	V8412	Como Rigato	Exotic				VMA
	V8414	Ebano Medio	Exotic		VGL		
	V8416	Sabbia Rigato	Straight grain	VCH			VMA
	V8417	Washed Oak	Straight grain			VGR	
	V8418	Lauro Crown	Crown		VGL		
	V8419	Koto Fino	Finegrain	VCH		VGR	
	V8420	Noce Fino	Finegrain	VCH		VGR	
	V8421	Zingana Argento	Exotic			VGR	



Formica Ligna® laminates combine the natural warmth of real wood with the versatility and practicality of Formica® Laminate. Ideal for interior, vertical applications, Formica Ligna engineered veneer laminates offer a beautiful variety of species, colours and surface finishes but with greater consistency than conventional veneers and, at the same time, respecting the environment by responsible forest management. The Formica Ligna laminate range is available certified as FSC® Chain of Custody 40% mix.

Grade VVS Veneer, Vertical, Standard (1.0mm nominal thickness).

Grade VVF Veneer, Vertical, Flame Retardant (1.0mm nominal thickness).

Classification of resistance to fire to EN 13501-1:2010-01 C-s2,d0

IMO/MED & USCG fire requirements approval to FTP Code Annex 1, Part 5 No.2.1 and Part 6 No.2.1

Formica Ligna grade VVF is available to order, subject to minimum order quantities and lead times.

Surface Finish Codes

Description	Designation	Code
Chiselled™	VCH	VC
Gloss™	VGL	VG
Grained™	VGR	VH
Matte™	VMA	VM

Formica Ligna laminates are delivered with a protective film.

Formica Group are FSC® certified and comply with the requirements of FSC. Network of participating European Formica Group sites is shown on certificate number TTCOC-003588.

All trademarks and copyrights are owned by The Diller Corporation.