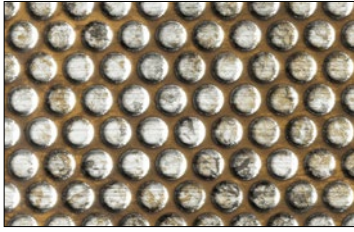




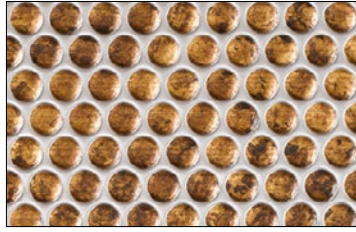
STRUCTURE | LINE
ACRYLIC | LINE
TRANSLUCENT | LINE

SIBU | DESIGN
we decorate.

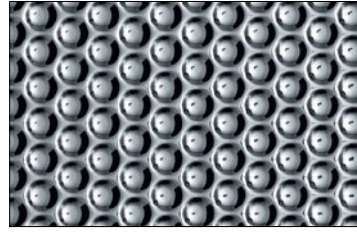
STRUCTURE | LINE



SL RACE Vintage Silver/Bronze PR
2600 x 1000 / NA 17242 / SA 17243



SL RACE Vintage Copper/Silver PR
2600 x 1000 / NA 17240 / SA 17241



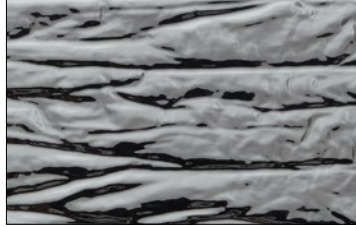
SL RACE Silver FR PR
2600 x 1000 / NA 17238 / SA 17239



SL MOTION TWO Grey brushed matt AR FR
2600 x 1000 / NA 15669 / SA 15681



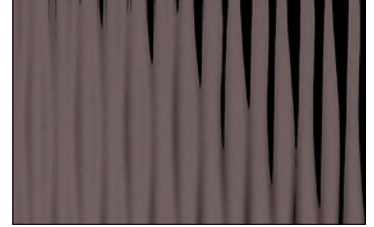
SL CRASHED Old Platin PR
2600 x 1000 / NA 19519 / SA 19523



SL CRASHED Mirror Silver FR PR
2600 x 1000 / NA 19335 / SA 19346



SL MOTION ONE Pearl White PF FR PR
2600 x 1000 / NA 17041 / SA 17043



SL MOTION ONE Anthracite AR FR
2600 x 1000 / NA 16479 / SA 16480



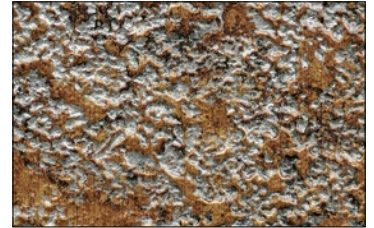
SL IMPACT Vintage Silver PR
2600 x 1000 / NA 17230 / SA 17231



SL IMPACT Antique Bronze PR
2600 x 1000 / NA 17232 / SA 17233



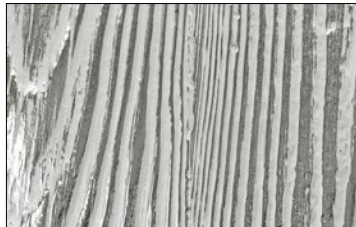
SL LAVA Grey FR PR
2600 x 1000 / NA 14785 / SA 14804



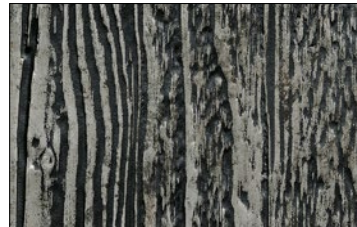
SL LAVA Copper FR PR
2600 x 1000 / NA 14786 / SA 14805



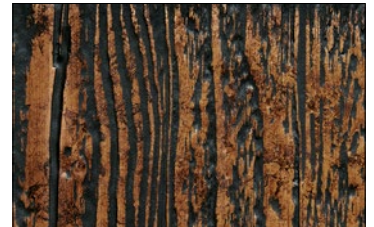
SL RIVET Vintage Silver PR
2600 x 1000 / NA 17236 / SA 17237



SL DAKOTA Metal FR PR
2600 x 1000 / NA 14789 / SA 14808



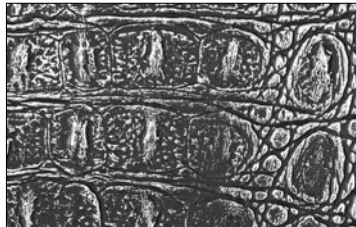
SL DAKOTA Smoke PR
2600 x 1000 / NA 14787 / SA 14806



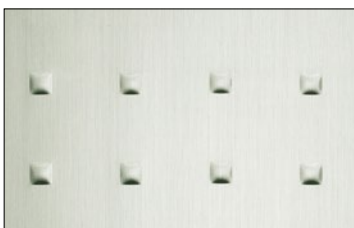
SL DAKOTA Copper PR
2600 x 1000 / NA 14788 / SA 14807



SL CROCO Silver PF met/Silver FR PR
2600 x 1000 / NA 13410 / SA 13520



SL CROCO Smoke PF met/Silver FR PR
2600 x 1000 / NA 13411 / SA 13521



SL SQUARE 3 HGS FR PR
2600 x 1000 / NA 11272 / SA 11273



SL STEP 5 Silver PF met FR PR
2600 x 1000 / NA 11307 / SA 11308



SL WAVE Silver FR PR
2600 x 1000 / NA 11350 / SA 11360

- D** Dreidimensionalität vereint mit aktuellen Farbkombinationen verleihen den Platten der STRUCTURE-LINE ihre unverwechselbare Optik. Die ACRYLIC-LINE umfasst strukturierte Hochglanzoberflächen aus hochwertigem ABS/PMMA-Material. Die Vertiefungen der TRANSLUCENT-LINE-Produkte sind lichtdurchlässig und somit ideal zu hinterleuchten.
- GB** Three-dimensionality in conjunction with contemporary colour combinations give the sheets of the STRUCTURE-LINE their distinctive look. The SIBU ACRYLIC-LINE includes textured high-gloss finishes from high-quality ABS/PMMA material. The recesses of the TRANSLUCENT-LINE products are light-permeable and therefore ideal for backlighting.
- FR** Trois dimensions unies à des combinaisons de couleurs actuelles donnent aux plaques de la ligne STRUCTURE-LINE leur aspect unique. La ligne ACRYLIC-LINE SibU comprend de brillantes finitions texturées de matériau ABS/PMMA de haute qualité. Les creux des produits de la ligne TRANSLUCENT-LINE laissent passer la lumière et sont donc parfaits pour le rétroéclairage.
- RUS** Трехмерный эффект вместе с модными цветовыми сочетаниями придает панелям STRUCTURE-LINE непревзойденную изысканность. В коллекцию SIBU ACRYLIC-LINE входят структурированные глянцевые поверхности из высококачественного материала ABS/PMMA. Углубления на панелях SIBU TRANSLUCENT-LINE пропускают свет и поэтому идеально подходят для подсветки.
- I** A rendere esteticamente inconfondibili i pannelli della linea STRUCTURE-LINE è la tridimensionalità, unita alle combinazioni cromatiche di ultima tendenza. La linea SIBU ACRYLIC-LINE comprende superfici strutturate lucide, realizzate in pregiato materiale ABS/PMMA. Le incisioni dei prodotti della linea TRANSLUCENT-LINE permettono il passaggio della luce e sono ideali per la retroilluminazione.
- ES** Los efectos 3D en conjunción con combinaciones de color actuales transmite a las hojas de la línea STRUCTURE-LINE su inconfundible apariencia. La gama SIBU ACRYLIC-LINE incluye superficies de alto brillo estructuradas, en ABS/PMMA de alta calidad. El fresado superficial de los productos de la línea TRANSLUCENT-LINE son translúcidas y de este modo son ideales para la retroiluminación.



SL LAVA Copper



SL CRASHED Old Platin



AC MOTION TWO White

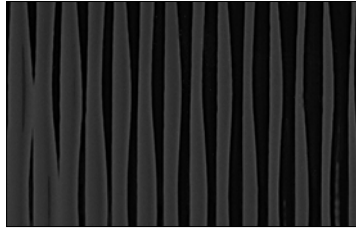


TL LINEA 104x62 Old Platin

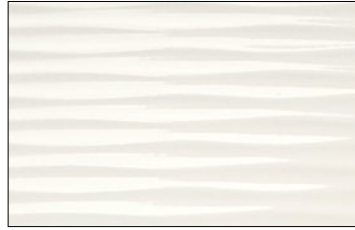
ACRYLIC | LINE



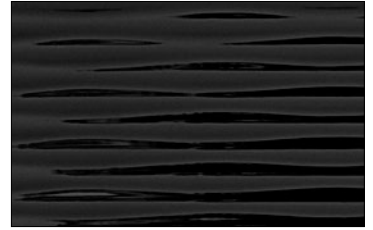
AC MOTION ONE White
2600 x 1000 / NA 15933 / SA 15953



AC MOTION ONE Black
2600 x 1000 / NA 15936 / SA 15956



AC MOTION TWO White
2600 x 1000 / NA 15755 / SA 15764



AC MOTION TWO Black
2600 x 1000 / NA 15754 / SA 15763

TRANSLUCENT | LINE



TL LINEA 104x62 Old Platin
2600 x 1000 / NA 18434 / SA 18607



TL LINEA 104x62 Silent Gold
2600 x 1000 / NA 18605 / SA 18606

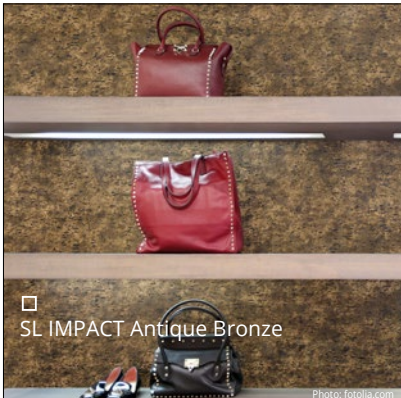


□ SL LAVA Copper



□ SL RACE Vintage Copper/Silver

Photo: Intuo



□ SL IMPACT Antique Bronze

Photo: fotollisa.com



□ SL DAKOTA Copper

PR Digitaldruck möglich / Digital printing possible / Impression numérique possible / Пригодный для запечатывания / Possibilità di stampa digitale / Impresión digital posible

NA Nicht klebend / Non-adhesive / Non adhésif / не самоклеящийся / Non adesivo / No adhesive

SA Stark klebend / Strongly adhesive / Autocollant / сильно самоклеящийся / Molto adesivo / Adhesivo fuerte.

FR Auf Wunsch schwer entflammbar erhältlich / flame-retardant version available on request / Disponible sur demande en version difficilement inflammable / По запросу может поставляться в трудновоспламеняемом исполнении / Disponibile in versione difficilmente infiammabile, su richiesta / A petición, también disponible con propiedades ignífugas.

i Detailliertere Infos dazu finden Sie im OVERVIEW und auf www.sibu.at / More detailed information you will find in our OVERVIEW and on www.sibu.at / Des informations supplémentaires vous trouvez dans notre catalogue OVERVIEW et sur www.sibu.at / Подробную информацию Вы найдете в OVERVIEW и на www.sibu.at / Per informazioni più dettagliate al riguardo, consultare OVERVIEW e il sito www.sibu.at / Encontrará información detallada al respecto en el catálogo OVERVIEW y en www.sibu.at



□
SL CRASHED Old Platin

Photo: fotolia.com



□
AC MOTION One Black



□
TL LINEA 104x62
Old Platin

Photo: SU VALGUS



SIBU | DESIGN
we decorate.

SIBU DESIGN GmbH & CoKG
Jupiterstraße 8 - 4452 Temberg - Austria - Tel.: +43 (0) 7256.6025.0
Fax: +43 (0) 7256.7020 - E-mail: info@sibu.at - www.sibu.at

SIBU|DESIGN_1117_500