



**HOLZ IN FORM**



# Holz in Form

a product of VD-Werkstätten



High quality and unique wood products, used in all areas of the interior is the strength of "VD-Werkstätten". Founded nearly 40 years ago as a specialised supplier to the local furniture industry we have grown through investment and groundbreaking innovations to become a mayor provider of embossed and shaped panels globally.

In the past marquetry, insertion and carvings adorned furniture and interior woodworking surfaces. Today it is the smooth, geometric form which is desired, and understood as a final solution of timeless beauty. Here we see our approach - the search for the modern ornament.

Inspired by the distinctive structures of natural and man-made textures, we are constantly striving to create unique surfaces that transform the cold, smooth shape and structure of interior surfaces. The geometry of moving water represents to us an example of how to visually represent the dynamics of nature in interpretive form. Flowing, dynamic shapes give the land a straight-consuming complexity and elegance, as it is only found in nature. The depth of these structures creates a distinctive and unique play of light and shadow and an unmatched blend of look and feel. Abstraction and reduced aesthetics are important, but they generate an unparalleled sculptural presence. The permanent communication with renowned designers and architects challenges, encourages and allows us to respond immediately to new trends. Our own research and development department, state of the art tool shop and a cutting-edge production facility are the guarantee for the high quality of our products.

Whether a standard panel, semi-finished parts, or finished installation ready carton-packaged furniture items - 130 employees provide a quality centered manufacturing process which encompasses every customers wish. Be inspired by a unique collection that sets the standards, and is known far beyond the borders of Europe.

# The structures

Flat structure with shallow pattern		Deep, narrow structures	Deep, wide structures
			
WAVE	STONE "S"	SPLIT	OCEAN
			
SCHILF	MOSAIK	GNEIS	FLAME
			
SISAL	DELTA	SPALT	DUNE
			
SEETANG	PYTHON	BORKE	PLUTO
			
GROOVE	BUBBLE	STONE "T"	WEIDENSTAB



## Model 2201 Wave

## Flat structures



Panel size:  
2450x1050mm/1050x2450mm  
3135x1270mm\*\*\*\*/1270x3135mm\*\*\*\*  
--first given measurement specifies the direction of the embossing--

Thickness:  
4.5mm and 18.5mm

Embossment: one side  
\*\*\*\*Repeating pattern for this size in grid pattern 625mm  
Repeating pattern marks on the panel

Surfaces:  
Alpi veneer light oak unlacquered  
Alpi oak chocolate unlacquered  
Alpi walnut unlacquered  
Alpi ebony maro unlacquered  
Alpi teakwood unlacquered  
Alpi black unlacquered  
lacquerable foil not lacquered  
lacquerable foil lacquered in white



## Flat structures

## Model 2417 Stone "S"

Panel size:  
2450x1050mm/1050x2450mm  
3135x1270mm/1270x3135mm  
--first given measurement specifies the direction of the embossing--

Thickness:  
18.5mm

Embossment: one side  
No repeating pattern

Surfaces:  
Alpi veneer light oak unlacquered  
Alpi oak chocolate unlacquered  
Alpi walnut unlacquered  
Alpi ebony maro unlacquered  
Alpi teakwood unlacquered  
Alpi black unlacquered  
lacquerable foil not lacquered  
lacquerable foil lacquered in white





## Model 2252 Schilf

## Flat structures



Panel size:  
2450x1050mm/1050x2450mm  
3135x1270mm/1270x3135mm  
--first given measurement specifies the direction of the embossing--

Thickness:  
4.5mm and 18.5mm

Embossment: one side  
No repeating pattern

Surfaces:  
Alpi veneer light oak unlacquered  
Alpi oak chocolate unlacquered  
Alpi walnut unlacquered  
Alpi ebony maro unlacquered  
Alpi teakwood unlacquered  
Alpi black unlacquered  
Alpi grey unlacquered  
lacquerable foil not lacquered  
lacquerable foil lacquered in white



## Flat structures

## Model 2343 Mosaik

Panel size:  
1050x2450mm  
3135x1270mm  
--first given measurement specifies the direction of the embossing--

Thickness:  
4.5mm and 18.5mm

Embossment: one side  
No repeating pattern

Surfaces:  
Alpi veneer light oak unlacquered  
Alpi oak chocolate unlacquered  
Alpi walnut unlacquered  
Alpi teakwood unlacquered  
Alpi black unlacquered







Panel size:  
2450x1050mm/1050x2450mm  
3135x1270mm/1270x3135mm  
--first given measurement specifies the direction of the embossing--

Thickness:  
4.5mm and 18.5mm

Embossment: one side  
No repeating pattern

Surfaces:  
Alpi veneer light oak unlacquered  
Alpi oak chocolate unlacquered  
Alpi walnut unlacquered  
Alpi ebony maro unlacquered  
Alpi teakwood unlacquered  
Alpi black unlacquered  
Alpi grey unlacquered



Panel size:  
1050x2450mm\*\*\*\*  
--first given measurement specifies the direction of the embossing--

Thickness:  
4.5mm and 18.5mm

Embossment: one side  
\*\*\*\*Repeating pattern for this size in grid pattern 1050mm

Surfaces:  
Alpi veneer light oak unlacquered  
Alpi oak chocolate unlacquered  
Alpi walnut unlacquered  
Alpi ebony maro unlacquered  
Alpi teakwood unlacquered  
Alpi black unlacquered  
lacquerable foil not lacquered  
lacquerable foil lacquered in white





## Model 2309 Seetang

## Flat structures



Panel size:  
2450x1050mm/1050x2450mm  
3135x1270mm/1270x3135mm  
--first given measurement specifies the direction of the embossing--

Thickness:  
4.5mm and 18.5mm

Embossment: one side  
No repeating pattern

Surfaces:  
Alpi veneer light oak unlacquered  
Alpi oak chocolate unlacquered  
Alpi walnut unlacquered  
Alpi ebony maro unlacquered  
Alpi teakwood unlacquered  
Alpi black unlacquered  
lacquerable foil not lacquered  
lacquerable foil lacquered in white



## Flat structures

## Model 2395 Python

Panel size:  
1050x2450mm\*\*\*\*  
--first given measurement specifies the direction of the embossing--

Thickness:  
4.5mm and 18.5mm

Embossment: one side  
\*\*\*\*Repeating pattern for this size in grid pattern 1050mm

Surfaces:  
Alpi veneer light oak unlacquered  
Alpi oak chocolate unlacquered  
Alpi walnut unlacquered  
Alpi ebony maro unlacquered  
Alpi teakwood unlacquered  
Alpi black unlacquered  
lacquerable foil not lacquered  
lacquerable foil lacquered in white





## Model 2432 Groove

## Flat structures



Panel size:  
1050x2450mm  
--first given measurement specifies the direction of the embossing--

Thickness:  
18.5mm

Embossment: one side  
No repeating pattern

Surfaces:  
Heartwood walnut real wood veneer unlacquered  
Heartwood beech real wood veneer unlacquered



## Flat structures

## Model 2393 Bubble

Panel size:  
2450x1050mm

Thickness:  
5.5mm and 18.5mm

Embossment: one side  
No repeating pattern  
Specific drawings for these embossments on request.

1 alignment bubbles – please order accordingly  
2 alignments bubbles – please order accordingly  
6 alignments bubbles – please order accordingly

Surfaces:  
lacquerable foil lacquered in white high gloss / white dull - all models  
lacquerable foil lacquered in black high gloss / black dull - all models



## Model 2451 Split

## Deep, narrow structures



Panel size:  
1270x3135mm  
--first given measurement specifies the direction of the embossing--

Thickness:  
21mm

Embossment: one side  
No repeating pattern, base plywood

Surfaces:  
Alpi veneer black unlacquered  
Alpi grey unlacquered  
Alpi wild elm tree unlacquered  
Heartwood walnut real wood veneer unlacquered  
Knob oak real wood veneer unlacquered  
Larch smoked real wood veneer unlacquered



## Deep, narrow structures

## Model 2430 Gneis

Panel size:  
1050x2450mm  
1270x3135mm  
--first given measurement specifies the direction of the embossing--

Thickness:  
21mm

Embossment: one side  
No repeating pattern

Surfaces:  
Alpi veneer light oak unlacquered  
Alpi oak chocolate unlacquered  
Alpi walnut unlacquered  
Alpi ebony maro unlacquered  
Alpi teakwood unlacquered  
Alpi black unlacquered  
Alpi grey unlacquered  
lacquerable foil not lacquered  
lacquerable foil lacquered in white



Realisierung: Barthels GbR, Die Tischlerei, Sickinge - Praxis Dr.med.dent. Marion Grabbert Zahnärztin - Bahnhofstr. 5 - 30159 Hannover - Germany





## Model 2468.1 Spalt-uniform fiddleback

## Deep, narrow structures



You will find special information in our brochures "Spalt straight and fiddleback" as well as "Spalt finishing guidelines".

Panel size:  
2450x625mm/2450x1250mm  
Size of crossbars 150x625mm  
--first given measurement specifies the height of the panel. With two given side panels and middle panels the surface area is optional expandable--

Other uniform or offset fiddleback patterns could be created using 2468 Spalt straight panels.

Thickness:  
31mm

Embossment: one side  
No repeating pattern, base plywood

Surfaces:  
Alpi veneer black unlacquered  
Alpi grey unlacquered  
Alpi Heartwood ash unlacquered  
Knob oak real wood veneer unlacquered  
Heartwood walnut real wood veneer unlacquered  
Antique walnut real wood veneer unlacquered  
Larch smoked real wood veneer unlacquered



## Deep, narrow structures

## Model 2468 Spalt-linear

You will find special information in our brochures "Spalt straight and fiddleback" as well as "Spalt finishing guidelines".

Panel size:  
635x2450mm  
2450x635mm  
--first given measurement specifies the direction of the embossing--

Thickness:  
21mm

Embossment: one side  
No repeating pattern, base plywood

Surfaces:  
Alpi veneer black unlacquered  
Alpi grey unlacquered  
Alpi Heartwood ash unlacquered  
Knob oak real wood veneer unlacquered  
Heartwood walnut real wood veneer unlacquered  
Antique walnut real wood veneer unlacquered  
Larch smoked real wood veneer unlacquered







Panel size:  
2450x635mm  
--first given measurement specifies the direction of the embossing--

Thickness:  
21mm

Embossment: one side  
No repeating pattern, base plywood

Surfaces:  
Heartwood walnut real wood veneer unlacquered  
Larch smoked real wood veneer unlacquered



Panel size:  
2450x625mm/2450x1250mm  
--first given measurement specifies the height of the panel. With two given panel sizes the surface area is optional expandable--  
Size of crossbars 125x125mm cross chess pattern arranged.  
Other uniform or offset fiddleback patterns could be created using 2487 Borke straight panels.

Thickness:  
31mm

Embossment: one side  
No repeating pattern, base plywood

Surfaces:  
Heartwood walnut real wood veneer unlacquered  
Larch smoked real wood veneer unlacquered





## Model 2420 Stone "T"

## Deep, narrow structures



Panel size:  
2450x1050mm/1050x2450mm  
3135x1270mm/1270x3135mm  
--first given measurement specifies the direction of the embossing--

Thickness:  
21mm

Embossment: one side  
In the panel size 3135x1270x21mm in direction of embossing 3135mm tolerances in thickness occur conditionally based on tools and structure. Please follow absolutely the finishing guidelines for this structure!  
No repeating pattern

Surfaces:  
Alpi veneer light oak unlacquered  
Alpi oak chocolate unlacquered  
Alpi walnut unlacquered  
Alpi ebony maro unlacquered  
Alpi teakwood unlacquered  
Alpi black unlacquered  
Alpi grey unlacquered  
Heartwood walnut real wood veneer unlacquered  
Heartwood beech real wood veneer unlacquered  
Knob oak real wood veneer unlacquered  
lacquerable foil not lacquered  
lacquerable foil lacquered in white



## Deep, wide structures

Panel size:  
2450x1050mm/1050x2450mm  
3135x1270mm\*\*\*\*/1270x3135mm\*\*\*\*  
--first given measurement specifies the direction of the embossing--

Thickness:  
9mm and 21mm

Embossment: one side  
\*\*\*\*Repeating pattern for this size in grid pattern 625mm  
Repeating pattern marks on the panel

Surfaces:  
Alpi veneer light oak unlacquered  
Alpi oak chocolate unlacquered  
Alpi ebony maro unlacquered  
Alpi teakwood unlacquered  
Alpi black unlacquered  
Alpi premium-makassar unlacquered  
Knob oak real wood veneer unlacquered  
Heartwood walnut real wood veneer unlacquered  
Heartwood beech real wood veneer unlacquered  
lacquerable foil not lacquered  
lacquerable foil lacquered in white



## Model 2344 Ocean





## Model 2369 Flame

## Deep, wide structures



Panel size:  
2450x1050mm/1050x2450mm  
3135x1270mm\*\*\*\*/1270x3135mm\*\*\*\*  
--first given measurement specifies the direction of the embossing--

Thickness:  
9mm and 21mm

Embossment: one side  
\*\*\*\*Repeating pattern for this size in grid pattern 625mm  
Repeating pattern marks on the panel

Surfaces:  
Alpi veneer light oak unlacquered  
Alpi oak chocolate unlacquered  
Alpi ebony maro unlacquered  
Alpi teakwood unlacquered  
Alpi black unlacquered  
Heartwood walnut real wood veneer unlacquered  
lacquerable foil not lacquered  
lacquerable foil lacquered in white



## Deep, wide structures

## Model 2306 Dune



Panel size:  
2450x1050mm/1050x2450mm  
3135x1270mm  
--first given measurement specifies the direction of the embossing--

Thickness:  
6mm and 18.5mm

Embossment: one side  
No repeating pattern

Surfaces:  
Alpi veneer light oak unlacquered  
Alpi oak chocolate unlacquered  
Alpi walnut unlacquered  
Alpi ebony maro unlacquered  
Alpi teakwood unlacquered  
Alpi black unlacquered  
Knob oak real wood veneer unlacquered  
Heartwood walnut real wood veneer unlacquered  
Larch smoked real wood veneer unlacquered







Panel size  
3135x1270mm

Thickness:  
18.5mm

Embossment: one side, base chipboard  
No repeating pattern

Surfaces:  
lacquerable foil not lacquered  
lacquerable foil lacquered in white  
lacquerable foil highgloss lacquered in black or white (on request as ready made elements)



Panel size:  
2450x1050mm/1050x2450mm  
3135x1270mm  
--first given measurement specifies the direction of the embossing--

Thickness:  
4.5mm and 18.5mm

Embossment: one side  
No repeating pattern

Surfaces:  
Alpi veneer light oak unlacquered  
Alpi oak chocolate unlacquered  
Alpi walnut unlacquered  
Alpi ebony maro unlacquered  
Alpi teakwood unlacquered  
Alpi black unlacquered  
Knob oak real wood veneer unlacquered  
Heartwood walnut real wood veneer unlacquered  
lacquerable foil not lacquered  
lacquerable foil lacquered in white





## Metal colours



**GOLD**



**SILVER**



**BRONZE**

Ready made elements with metal coating (on different structures)

Panel size: customer request

Thickness: depending on chosen structure

Embossment: one side

Repeating pattern depending on chosen structure

Surfaces:

metal coating in GOLD

metal coating in SILVER

metal coating in BRONZE

## Veneers and lacquering



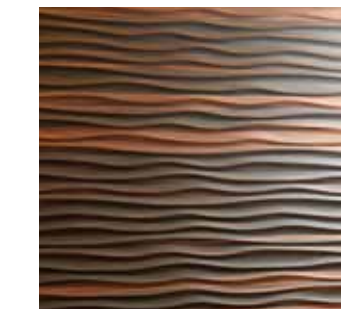
Alpi oak chocolate



Alpi light oak



Alpi teakwood



Alpi premium-makassar



Alpi black



Alpi walnut



Alpi wild elm tree



Heardwood walnut  
real wood veneer



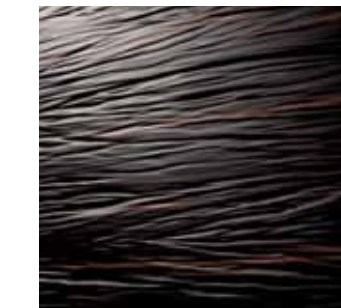
Alpi grey



Alpi heardwood ash



Knob oak real wood veneer



Alpi ebony-marò



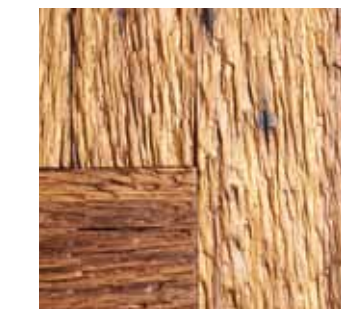
Heardwood beech  
real wood veneer



black    white  
High gloss



Antique walnut



Larch smoked  
real wood veneer

--In all Holz in Form brochures and documents the first given measurement of the panel sizes specifies the direction of the embossing as well as the running direction of the veneer--  
Not all sizes and directions of structure are in the standard program, please ask!  
Former quotations of structures are on request (minimum order 10 panels).



Please note our news, pictures, films plus finishing recommendations, technical Data sheets and drawings for the "Holz in Form" structures and surfaces on our website: [www.vd-holzinform.de](http://www.vd-holzinform.de)





## Holz in Form

Am Hasselbruch 3

32107 Bad Salzuflen

Germany

Tel. +49 5208 95777-0

Fax +49 5208 95777-79

[info@vd-holzinform.de](mailto:info@vd-holzinform.de)

[www.vd-holzinform.de](http://www.vd-holzinform.de)



**HOLZ IN FORM**